



Auckland's Ultimate Event Venue



About Us

Discover Kauri Bay, the Ultimate Experience Venue offering breathtaking coastal views over the Hauraki Gulf.

WELCOME TO KAURI BAY

As Auckland's Ultimate Experience Venue for functions and events, situated on a stunning private 500-acre Clevedon property with expansive coastal views over the Hauraki Gulf and towards the Coromandel Peninsula. This purpose-built facility is renowned for its versatility and unwavering commitment to delivering exceptional New Zealand cuisine, wine and service.

Kauri Bay provides an ideal environment for both relaxation and celebration, for a corporate event, product launch, private gathering or a wedding. The picturesque setting and modern facilities are perfectly suited for an intimate gathering of 10 or a grand affair for up to 250 guests.



Our Venues

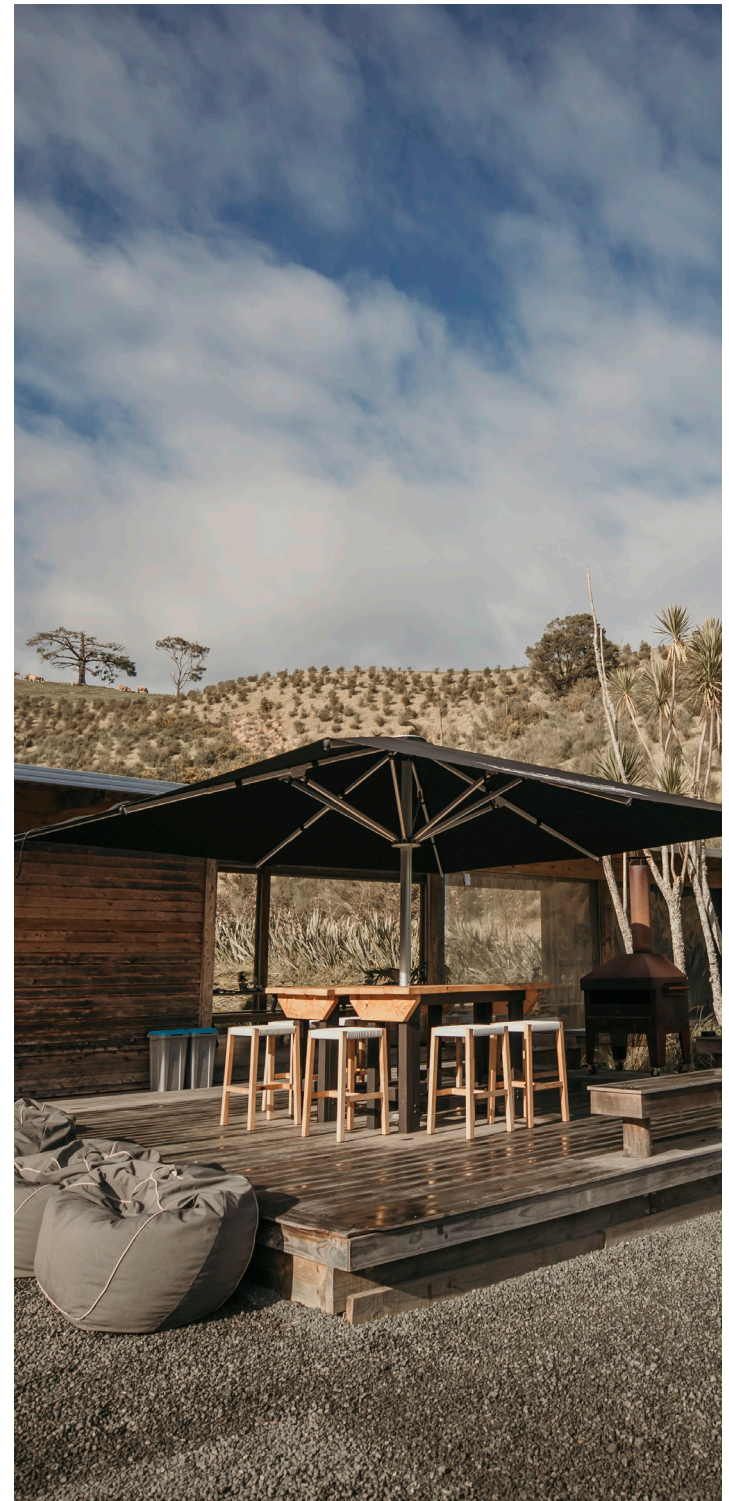
PLANNING YOUR EVENT DAY

With three distinct venues located on site, we are equipped to host and cater to any type of event, ensuring a perfect setting for every occasion.

Escape the busy pace of life and host your next event with us. With three individually designed facilities: The Lodge, The Bunkers and The Quails Nest we have the perfect venue to select from for your event.

Guests can unwind with leisurely activities or indulge in adrenaline-pumping adventures. A taste includes Claybird Shooting, Digger Challenge, Cocktail Making Classes, Archery and Extreme Hole-In-One Golf Challenges.

Located a convenient 45 minutes from Auckland CBD or 30 minutes from the International Airport, Kauri Bay ensures seamless transportation for all guests. For a truly memorable arrival, guests can also opt for helicopter transfers, adding a touch of luxury to any occasion.



The Lodge

ABOUT

The Lodge has the ability to host up to 250 guests in a warm and relaxed atmosphere. It is the complete venue to entertain from corporate meetings to wedding celebrations, international incentives, private functions and product launches.

It provides breathtaking views of the Hauraki Gulf and surrounding landscapes. Enjoy tailored catering, a range of activities and personalised service, ensuring an unforgettable experience in a stunning setting.

MENU OPTIONS

- Canapes
- Grazing Board
- Cheeseboard
- Family Platter Style
- Set Menu
- Cocktail Style
- Working Style

CAPACITY

- | | |
|-----------------|-----|
| • Classroom | 115 |
| • Theatre | 180 |
| • Seated Dining | 200 |
| • Cocktail | 250 |
| • U-Shape | 130 |



The Bunkers

ABOUT

The Bunkers is the ultimate venue for any private or corporate experience. Nestled in the scenic high hill terrain, this versatile venue caters for up to 50 guests and is the ideal setting for your next day out with multiple activity options.

It is established as a unique purpose-built Claybird Shooting facility with the ability to host first time and NZ competition shooting. With the latest Beretta shotguns in hand, you'll discover up to 20 hidden Claybird traps across four fields.

MENU OPTIONS

- Grazing Board
- Cheeseboard
- Family Platter Style
- Working Style
- Bunkers Bites

CAPACITY

- Seating Dining 50
- Standing 70



The Quails Nest

ABOUT

The Quails Nest is a charming and intimate venue within the tranquil valley surroundings. It is perfect for smaller gatherings of up to 15 guests that seek a shooting fueled experience. Guests will be entertained for hours with the adrenaline-filled activities of Claybird Shooting, Darts and Extreme Golf Challenge, with casual light catering available.

MENU OPTIONS

- Grazing Board
- Cheeseboard
- Quails Bites
- Working Style

CAPACITY

- Standing 15





Venue Hire

PER HALF DAY

JANUARY - OCTOBER

The Lodge | \$1,450

The Bunkers | \$1,050

The Quails Nest | \$550

NOVEMBER & DECEMBER

The Lodge | \$1,850

The Bunkers | \$1,450

The Quails Nest | \$950

MINIMUM SPEND CRITERIA

The Bunkers | \$3,500

The Quails Nest | \$2,000

THE LODGE MINIMUM SPEND CRITERIA

Winter | \$3,500

Summer | Friday & Saturdays | \$12,000

Summer | Sunday - Thursday | \$5,000

All prices exclude GST and are valid until December 31st 2025. In some circumstances prices can be subject to change. We will always provide a fully itemised personalised quotation prior to booking.

Pricing

CATERING

All Day Tea & Coffee		\$10pp
Morning Afternoon Tea		\$25pp
Working Style Lunch	from	\$55pp
Family Style Plater Menu	from	\$95pp
Set Menu (Lodge only)	from	\$110pp
Canapes (Lodge only)	from	\$11pp
Cheeseboard	from	\$15pp
Grazing Board	from	\$25pp
Bunkers or Quails Bites	from	\$35pp

BEVERAGES

Bar Tab	On consumption
On site Barista	from \$650

TRANSPORTATION

Coach	POA
Mercedes Vehicle	from \$280
Helicopter	from \$1,860

CONFERENCE EQUIPMENT

Whiteboard, flipchart, sound system, WiFi, photocopier, scanner, pens, paper, mints, one 85" smart Samsung TV (Lodge only), one 60"TV (Bunkers only), microphone & stand.	\$350
---	-------

PHOTOGRAPHER

Capturing the moments	per hour	\$350
-----------------------	----------	-------

All prices exclude GST and are valid until December 31st 2025. In some circumstances prices can be subject to change. We will always provide a fully itemised personalised quotation prior to booking.



Cuisine

Enjoy the popular social experience of our Family Platter Style menu or the traditional feel of our Set menu.

Kauri Bay offers a cuisine experience that blends elegance with local flavors, catering to discerning tastes in a stunning natural setting. Our culinary offerings showcase fresh, locally sourced ingredients prepared with meticulous attention to detail.

We believe in showcasing some of New Zealand's finest products available as every meal is an opportunity to savor and celebrate.

Sharing Platter Style Menu:

Features dishes placed centrally on the table to encourage sharing and enjoying together.

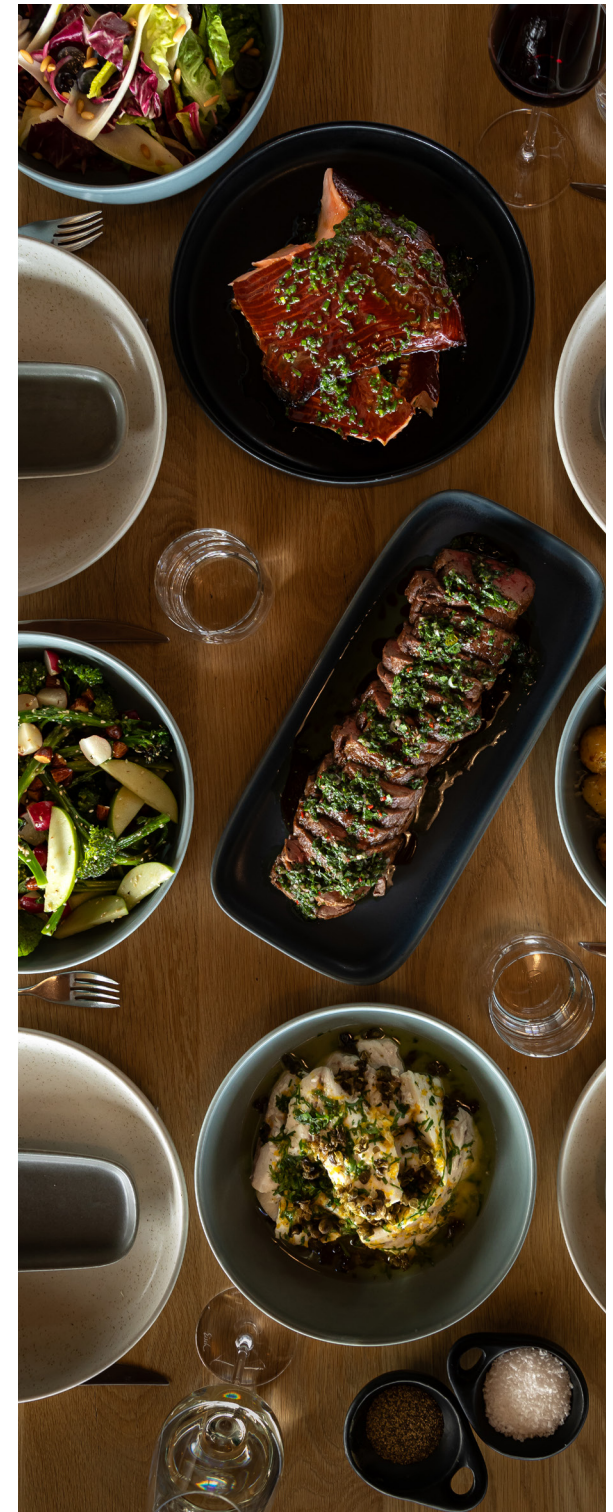
Traditional Set Menu:

For those preferring a more traditional dining experience of three course or more.

Working Style Menu:

Perfect for busy conference schedules where the station-style setup encourages networking and mingling in a relaxed atmosphere.

We cater to all dietary preferences and requirements.



Sample Menus

PLATTER STYLE

To Start

Caraway & Fennel Seed Bread Rolls
w black garlic butter

To Share

Whole Roasted Speckle Park Eye Fillet
w chimichurri, pinot jus

Hot Smoked King Salmon
w burnt orange dressing, chives

Served with

Charred broccolini, burrata, green olive, oregano
Duck fat new potatoes, maple, thyme,
rosemary, Waikato pecorino
Cos lettuce, radicchio, witloaf, feta vinaigrette

Dessert

Tiramisu, coffee, mascarpone, cocoa, sponge
w tea and coffee

SET MENU

To Start

Caraway & Fennel Seed Bread Rolls
w black garlic butter

Entree

Slow Cooked Pork Belly
w celery, apple, walnut and cauliflower

Main (guests to select one)

Grass Fed Speckle Eye Fillet
w smother parsnip, burnt onion, sherry vinegar
and pinot jus

OR

Line Caught Market Fresh Fish
w celeriac, oyster mushrooms, lemon, parsley

Dessert

Roasted Apple, fennel syrup, sour cream ricotta
beignet
w tea and coffee

WORKING STYLE

Sandwich

Roasted Eye Fillet
w pepper crust, brie, caramelised onions

Hot Selection

Invercargill Braised Lamb Shoulder
w tomato, mint, Israeli couscous

Salad

Charred Broccoli,
w date, buckwheat, picked red onion
w tea and coffee

Activities

CLAYBIRD SHOOTING

Take aim at Claybirds amidst unparalleled scenery. This thrilling experience caters to all skill levels, from first-time shooters to enthusiasts, promising an unforgettable adventure.

10 shots per person \$45pp
Flurries from \$50pp



DIGGER CHALLENGE

Put your hand-eye coordination to the test with this surprising and entertaining activity. Race against the clock to maneuver a two-tone digger and achieve the best time. It's more challenging than you might expect!

\$45pp



ARCHERY

Step into your Robin Hood fantasy and test your aim at hitting the bullseye. Armed with 10 arrows, this quietly competitive activity challenges you to let your skills speak for themselves.

10 arrows per person \$35pp



Activities

EXTREME HOLE-IN-ONE GOLF

Think your swing is up to the challenge? Test your skills and aim for a hole-in-one from distances of 80 up to 320 meters at our challenge pin locations. Exciting prizes await those who achieve this impressive feat!

\$2.50per ball

GOLF PUTTING GREEN

The Putting Green gives guests the opportunity to embrace their inner Tiger Woods and practice their putt off the course.

\$200 unlimited use

AXE THROWING

Experience the satisfying release of pent-up energy as you wield an axe and send it spinning into the target. It's a thrilling activity that lets you unleash your inner lumberjack with every throw.

\$25pp



Activities

WINE CHALLENGE

How in tune is your palette? A fun, interactive and competitive way to increase your knowledge of wine. Sip away and test your pallet on some of New Zealand's top wines.

\$50pp



WHISKEY TASTING

For those who enjoy whiskey neat, or those who are keen to expand their whiskey knowledge, let an expert take you through a tiered tasting of some of the best. Rum, vodka, gin and other spirits are also available.

\$70pp



PUZZLE

Test your group's ability to coordinate together by building a structure with supplied materials within the allocated time frame - some interesting designs to be seen! Perfect for team building events.

\$20pp



Activities

SIP 'N' PAINT

Sip 'n' Paint is a delightful blend of creativity and social interaction, offering you the chance to express your artistic talents while enjoying your favourite beverage. This activities is perfect for both seasoned artists and beginners looking for a fun and relaxing experience.

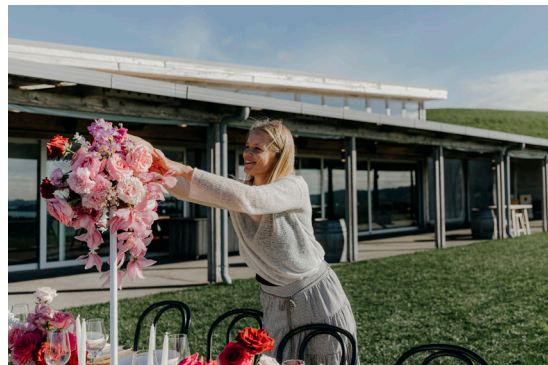
\$80pp



FLORAL WORKSHOP

Perfect for Hen's Dos or Corporate events, indulge in DIY floral creations using the freshest flowers. Under the guidance of an experienced florist, learn to craft everything from flower crowns, posies and bouquets to take home.

\$160pp



CORPORATE CHALLENGE

Get excited! Whether you're looking for something thrilling and competitive, a more relaxed experience, or something with a deeper meaning in its outcome. Corporate Challenge Events delivers team building programs and workshops that use the power of play to enhance workplace culture and boost team performance.

POA



Activities

4WD EXPERIENCE

Let our experienced drivers escort you on a off-road adventure through Clevedon's rolling terrain. Brace yourself for adrenaline as you navigate creeks, hillsides, and mud in a top-of-the-line Land Rover vehicle.

\$65pp



SCENIC FLIGHTS

Soak in the beauty of the landscape and the serene waters below. It's a perfect opportunity to relax and appreciate the natural wonders of the area from a unique perspective.

POA



COMPLIMENTARY GAMES

Looking for extra entertainment? Enjoy a game of Petanque, Giant Jenga, Giant Connect Four, Corn Hole and Darts.

Note: some options are only available at specific venues.

Complimentary





Get in Touch

If you have any questions, would like a tailored quotation or enquire about available dates, please call us [+64 298 7779](tel:+642987779) or email events@kauribay.co.nz

